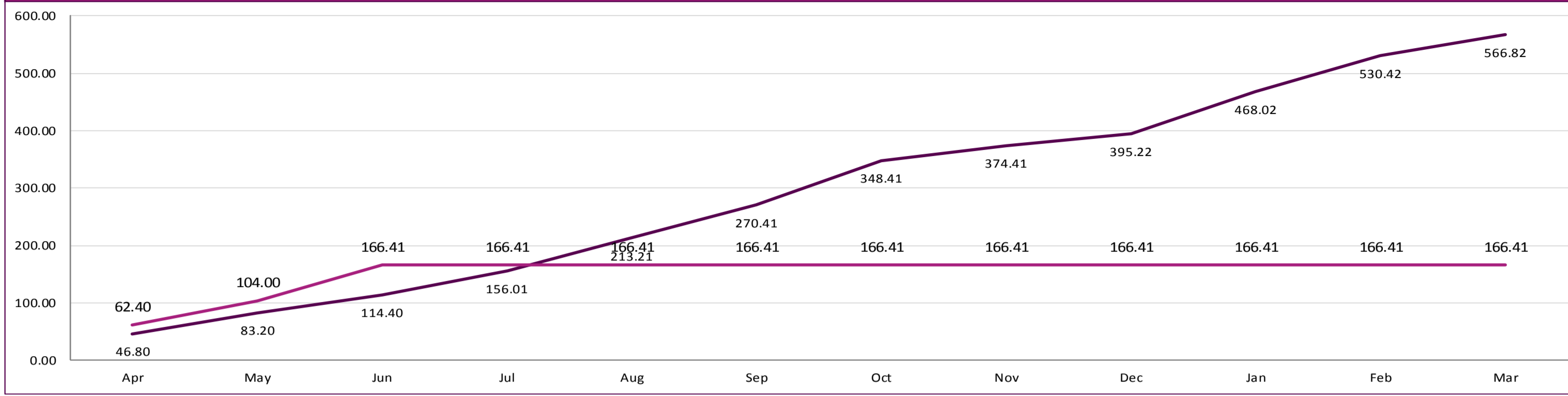


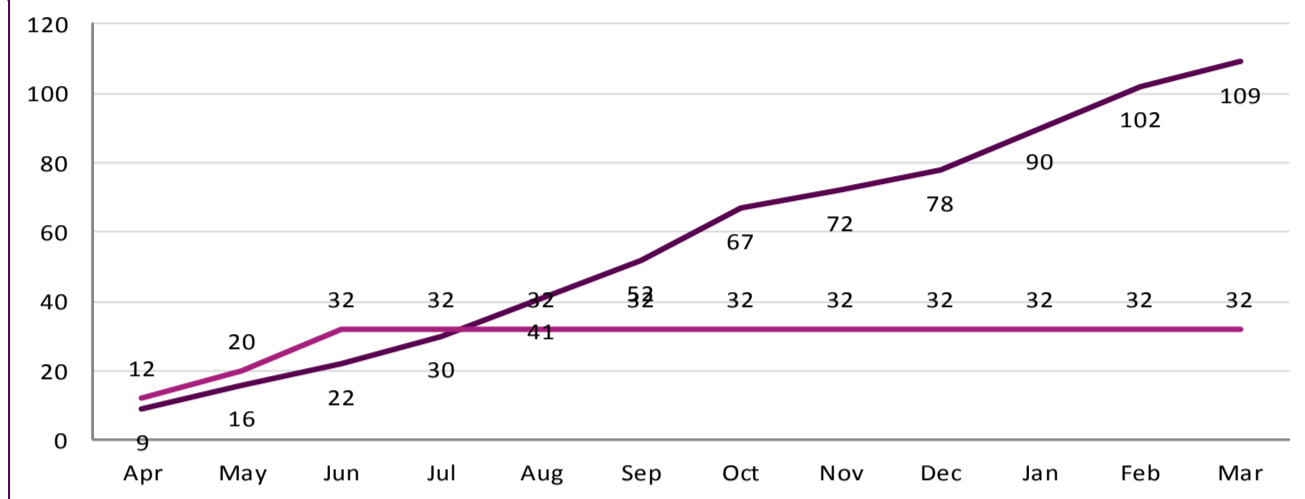
Older Adults

Permanent admissions to residential and nursing care homes, per 100,000 population (Cumulative)

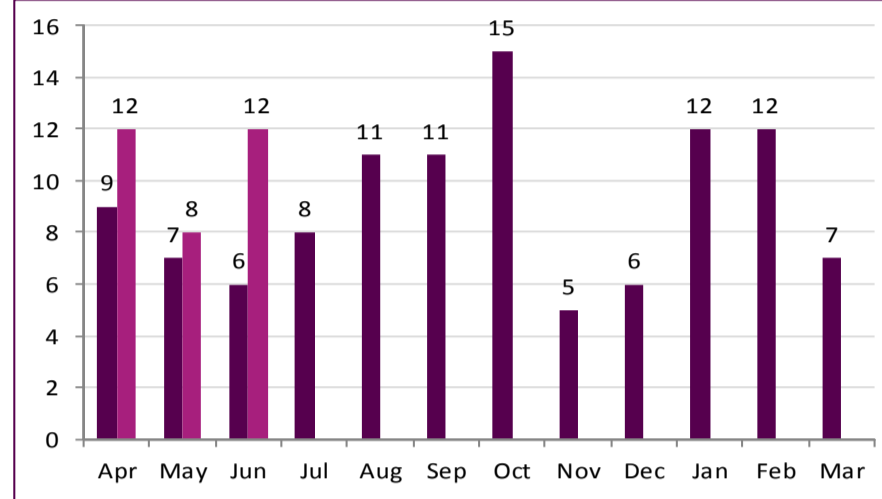


Key: 2016 to 2017
2017 to 2018

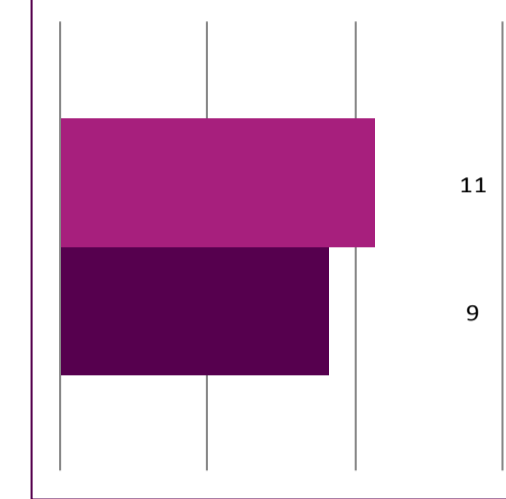
Number of permanent admissions to residential and nursing care homes (Cumulative)



Number of permanent admissions to residential and nursing care homes (Monthly)

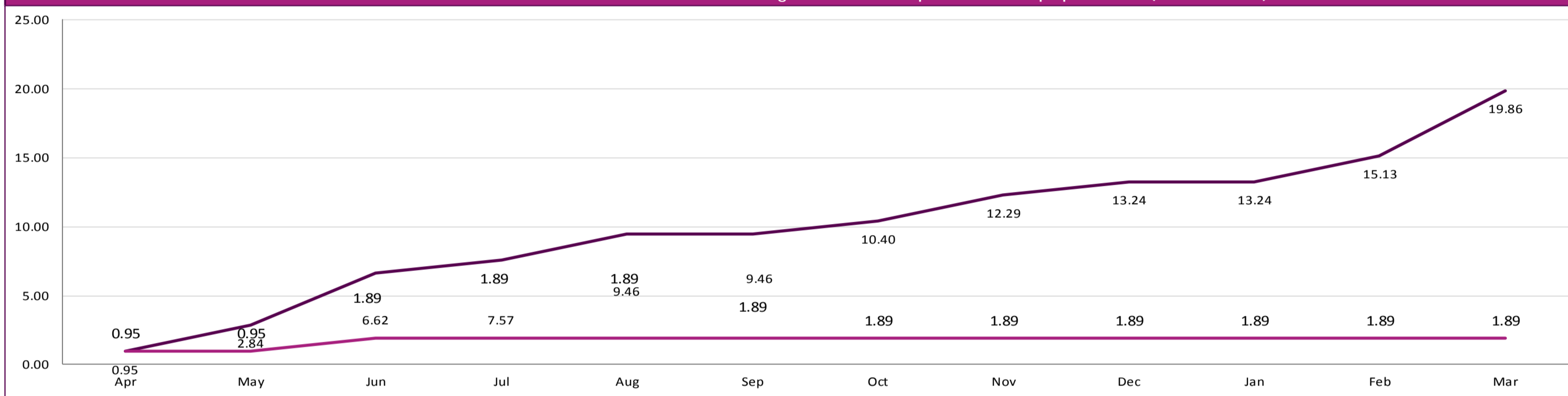


Average



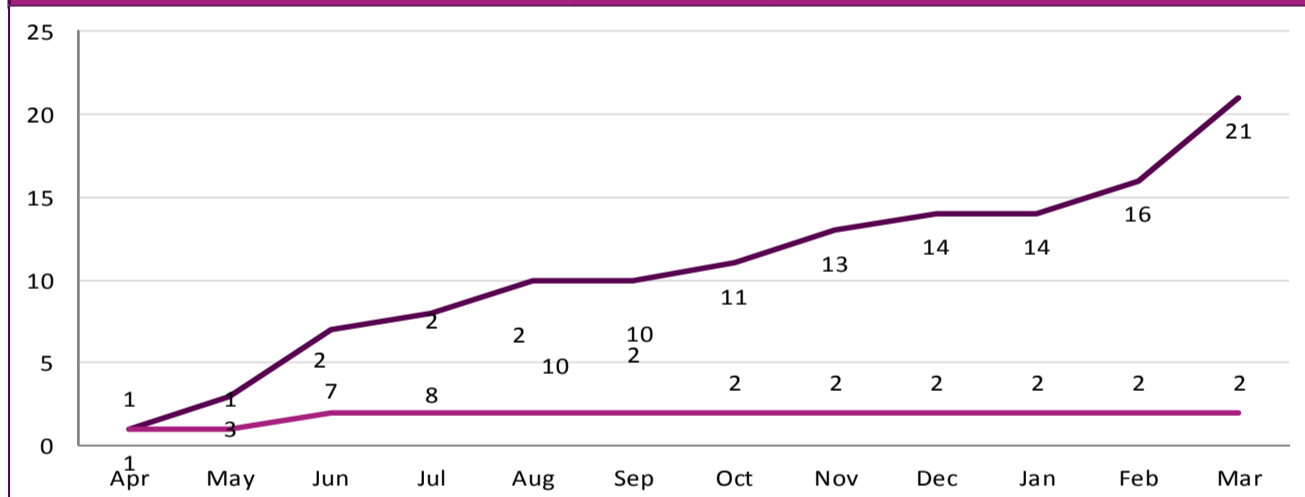
Younger Adults

Permanent admissions to residential and nursing care homes, per 100,000 population (Cumulative)

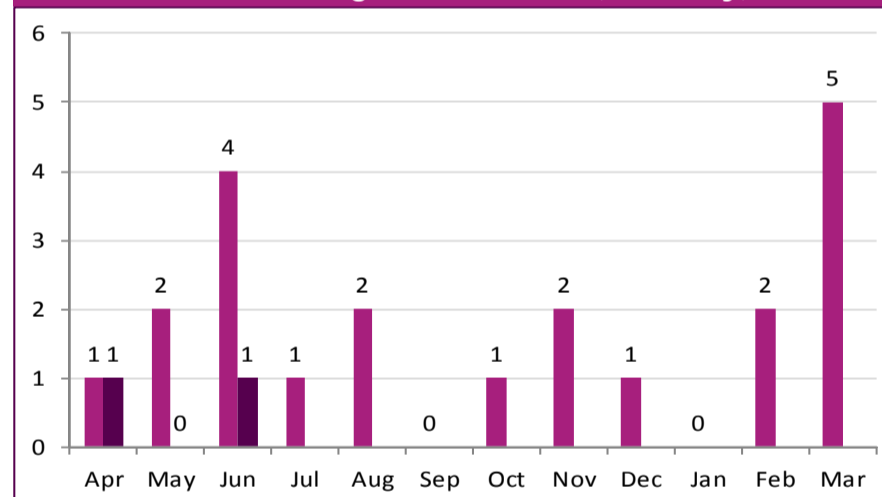


Key: 2016 to 2017
2017 to 2018

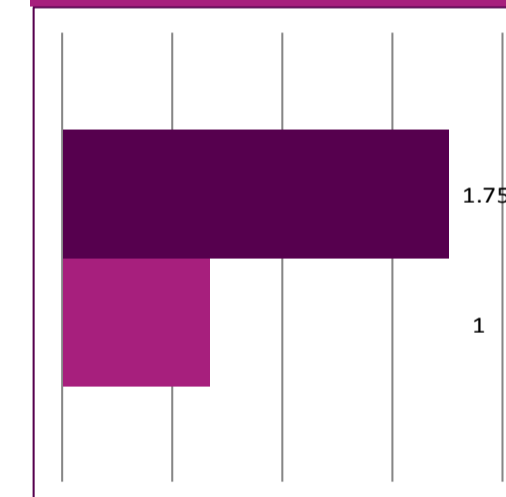
Number of permanent admissions to residential and nursing care homes (Cumulative)



Number of permanent admissions to residential and nursing care homes (Monthly)

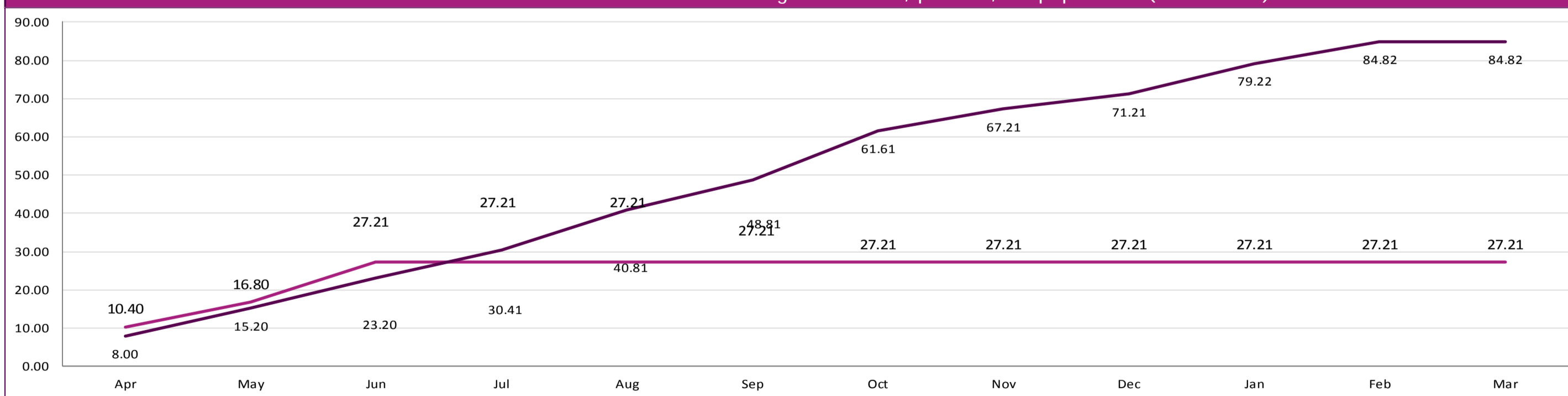


Average



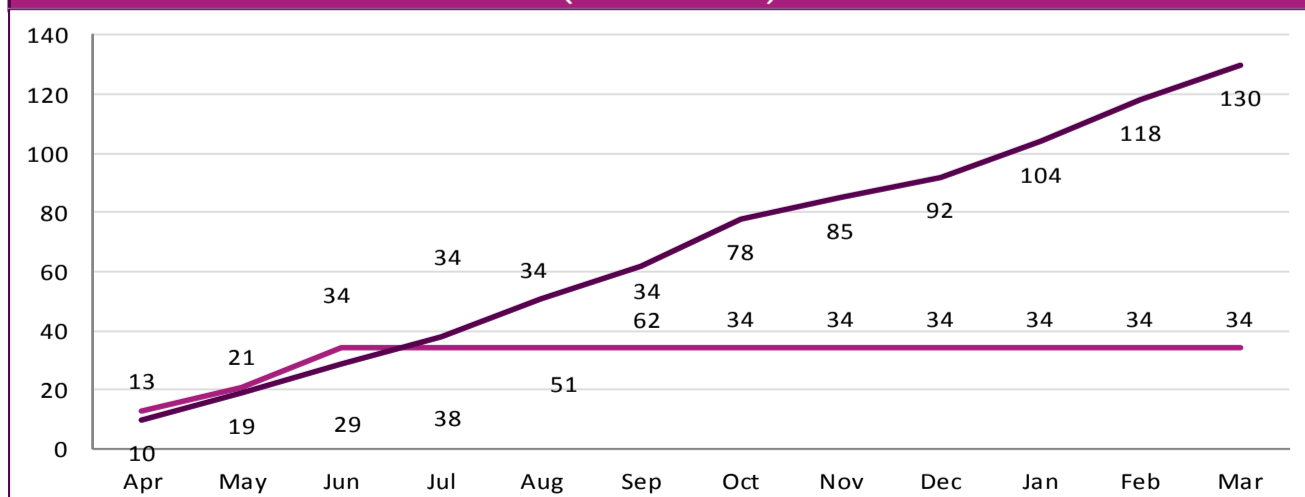
All Adults

Permanent admissions to residential and nursing care homes, per 100,000 population (Cumulative)

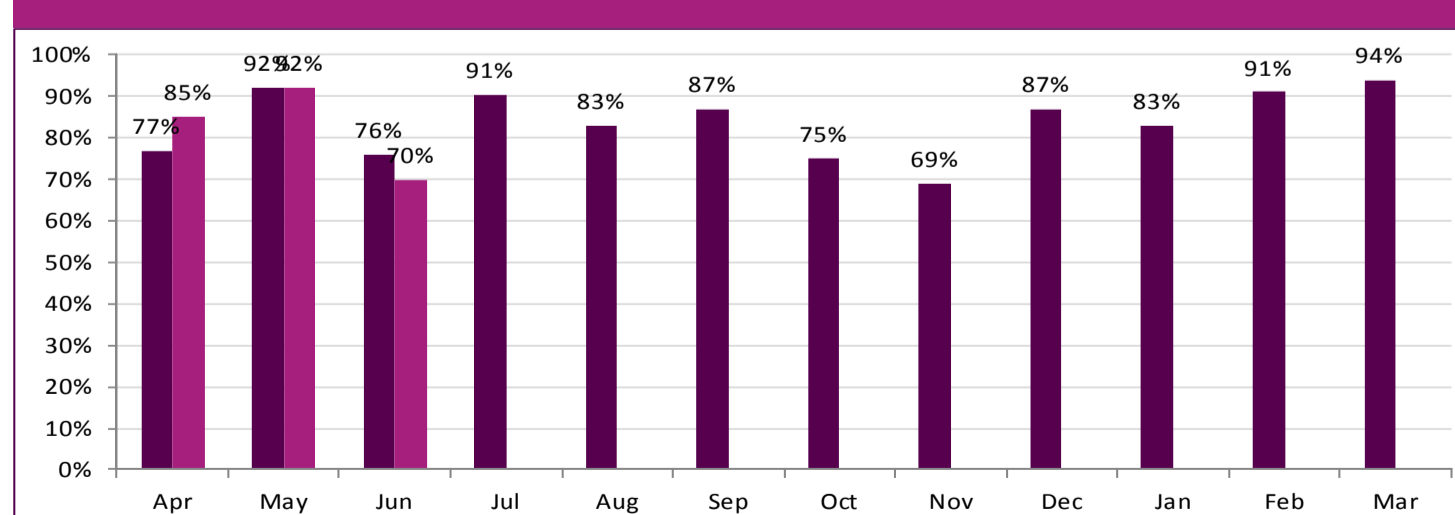


Key: 2016 to 2017
2017 to 2018

Number of permanent admissions to residential and nursing care homes (Cumulative)



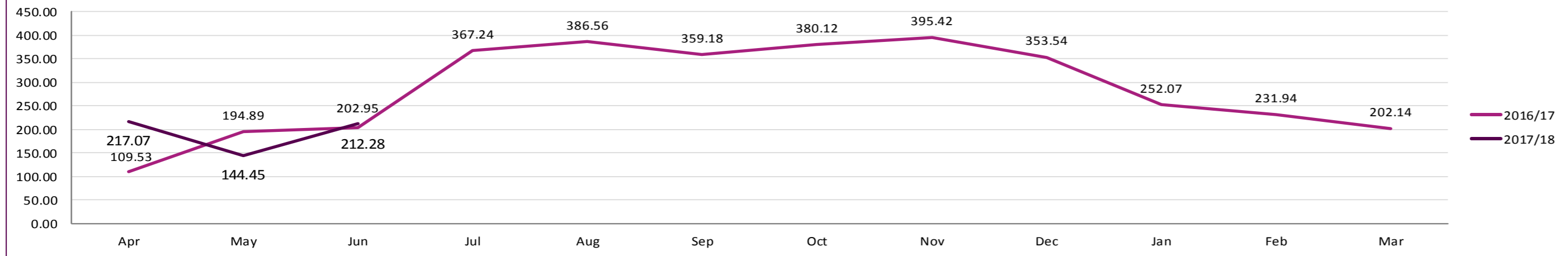
Willows - DTA beds usage (link to BCF-DMT Only)



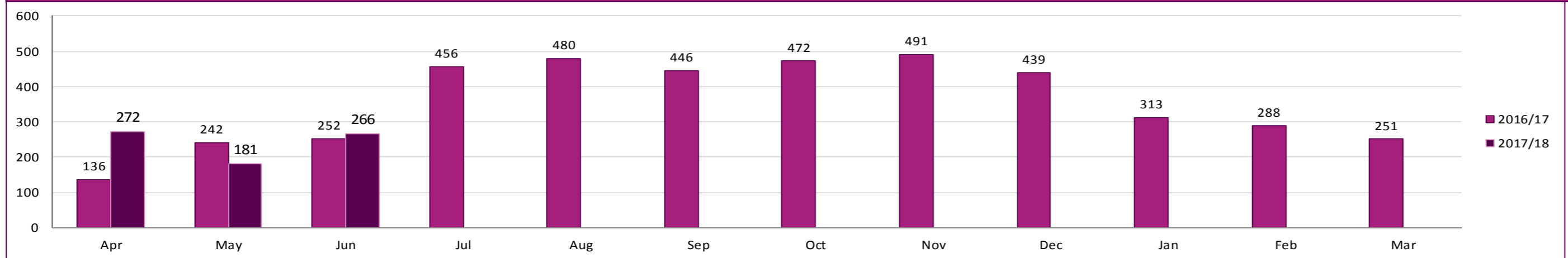
Delayed Transfers of Care (DToC) from Hospital

Report

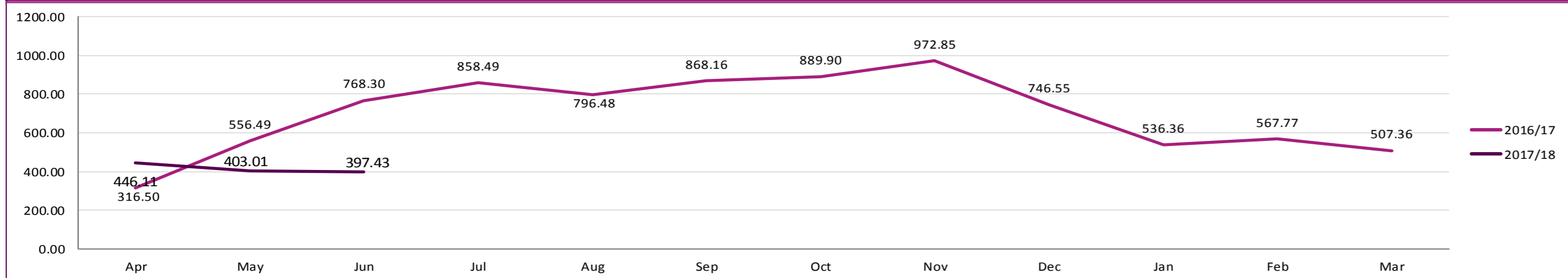
Days Delayed transfers of care from hospital ASC (per 100,000 population)



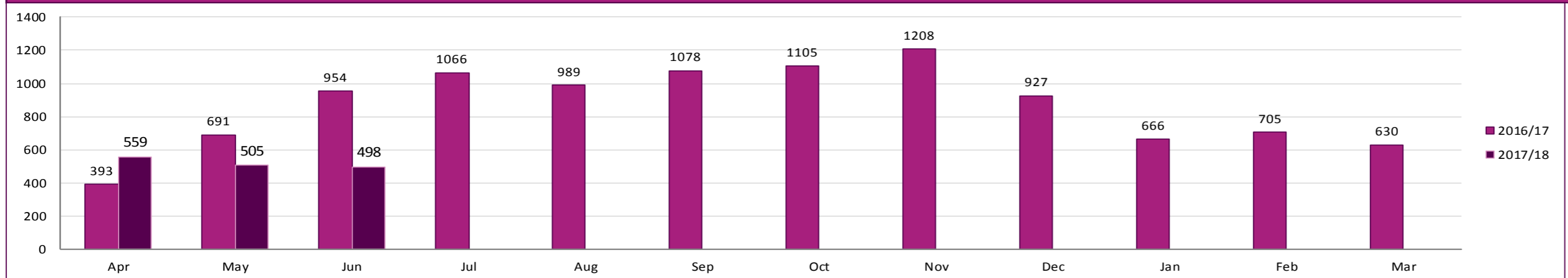
Days delayed transfers of care from hospital - ASC



Days Delayed transfers of care from hospital per 100,000 population - Health, ASC and Both



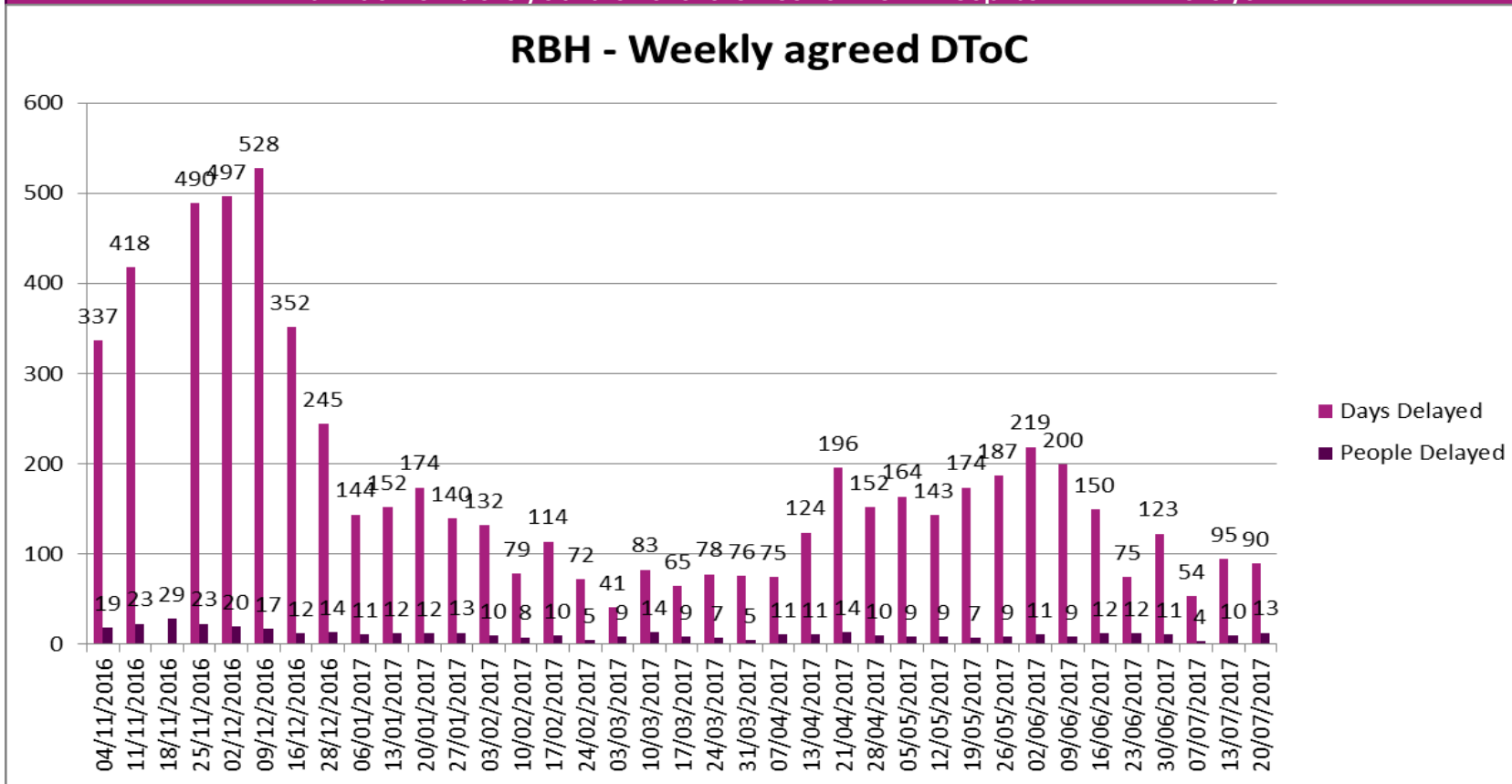
Days delayed transfers of care from hospital - Health, ASC and Both



Delayed Transfers of Care (DToC) from Hospital - RBH Data

The number of people and days delayed at RBH Hospital is generally showing great improvement. An OT and other discharge staff are having a really positive impact on getting people out of hospital promptly.

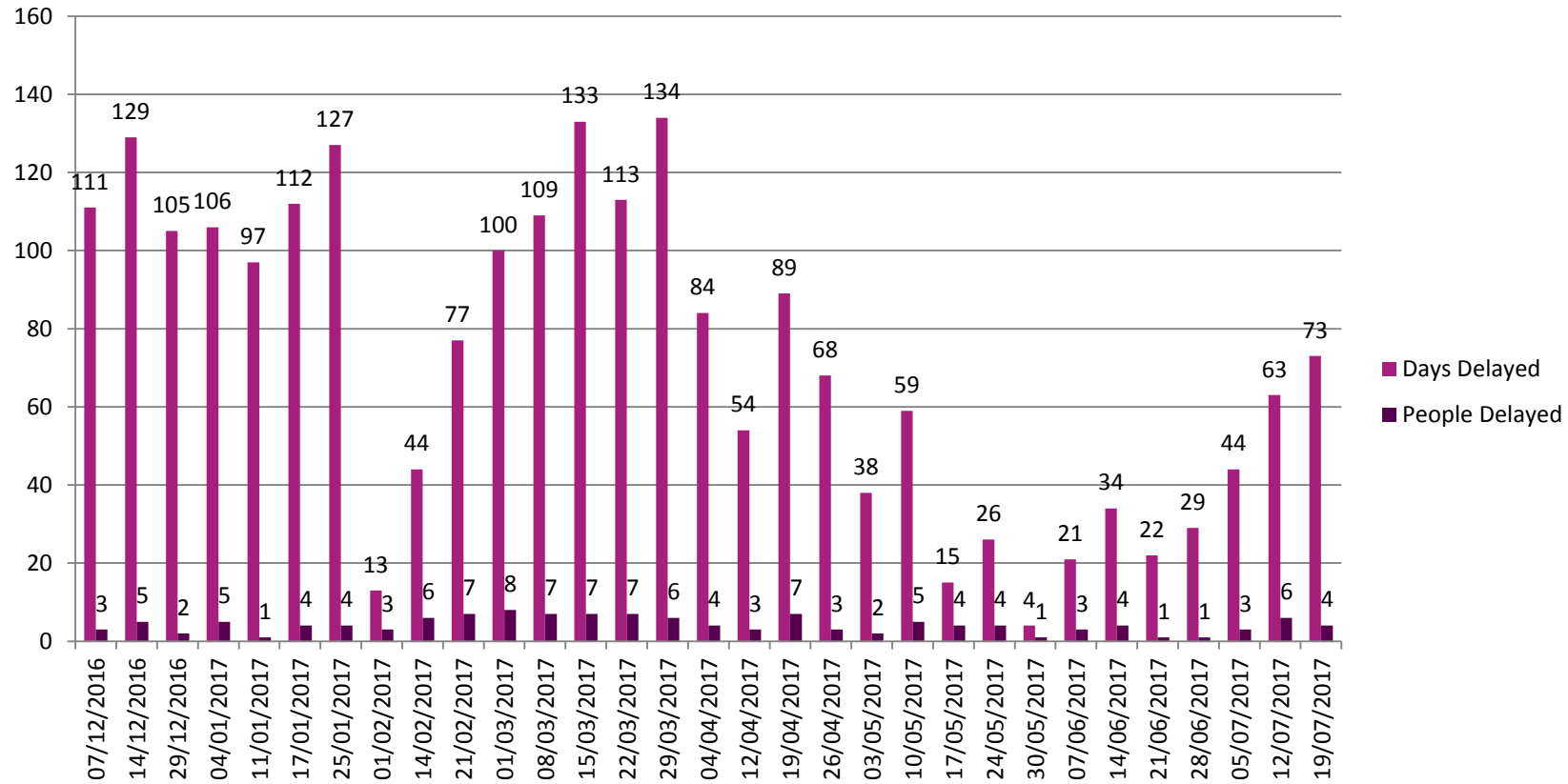
Number of delayed transfers of care from hospital - RBH Delays



Delayed Transfers of Care (DToC) from Hospital - Oakwood Data

Number of delayed transfers of care from hospital - Oakwood Delays

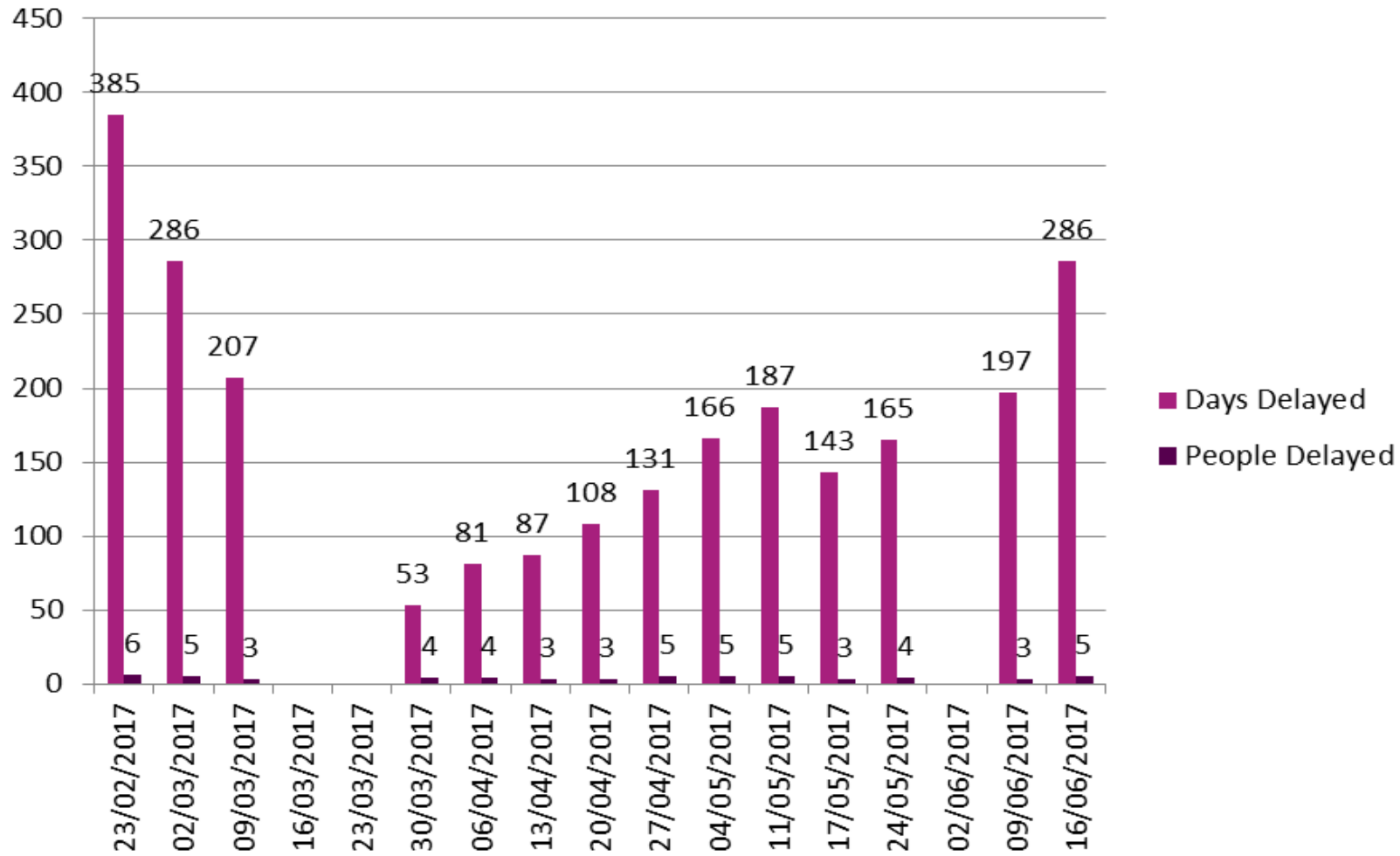
Oakwood - Weekly agreed DToC



Delayed Transfers of Care (DToC) - Prospect Park Hospital

Number of delayed transfers of care from hospital - Prospect Park Delays

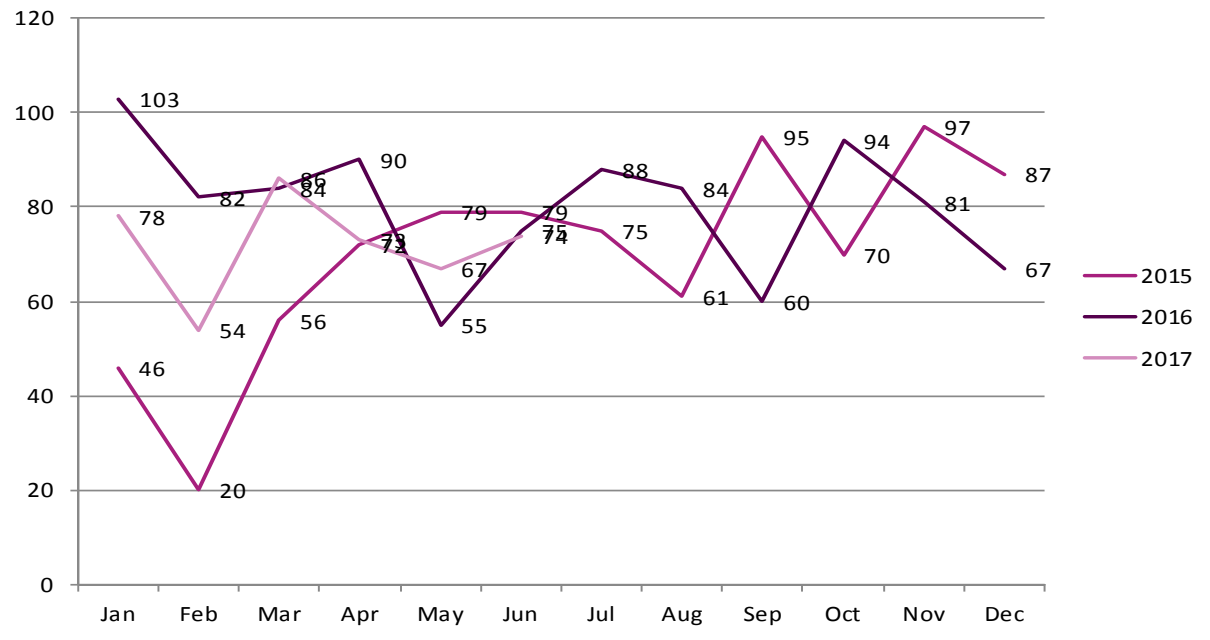
Prospect Park DToC



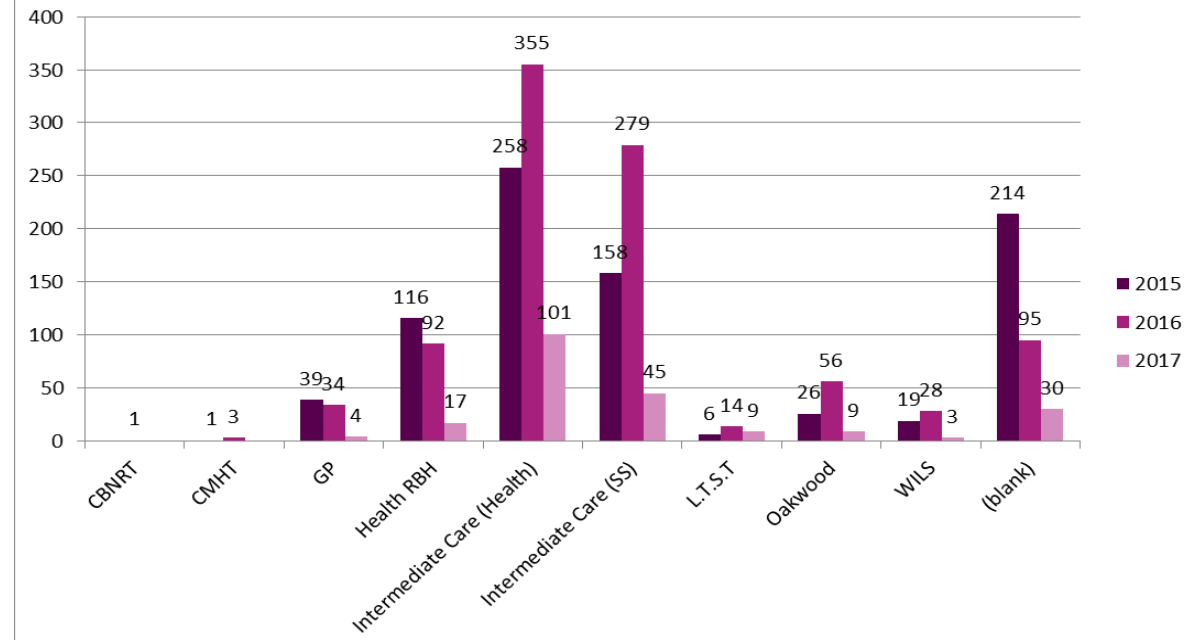
Community Reablement Team

The admissions and discharges should balance out to maintain flow through the service.

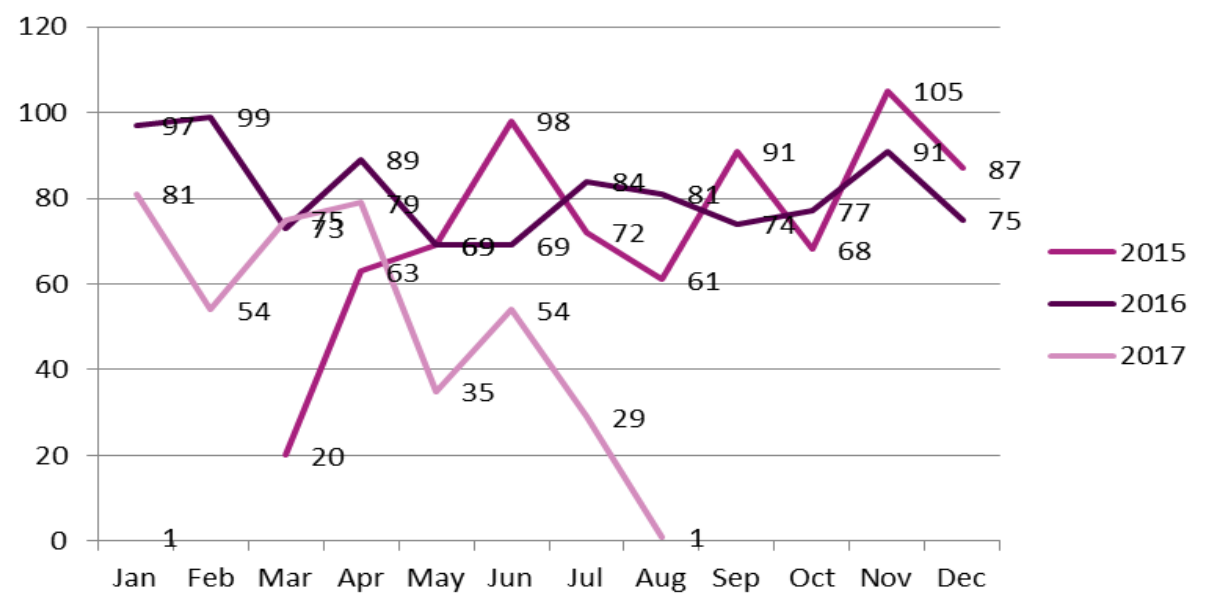
CRT Admissions



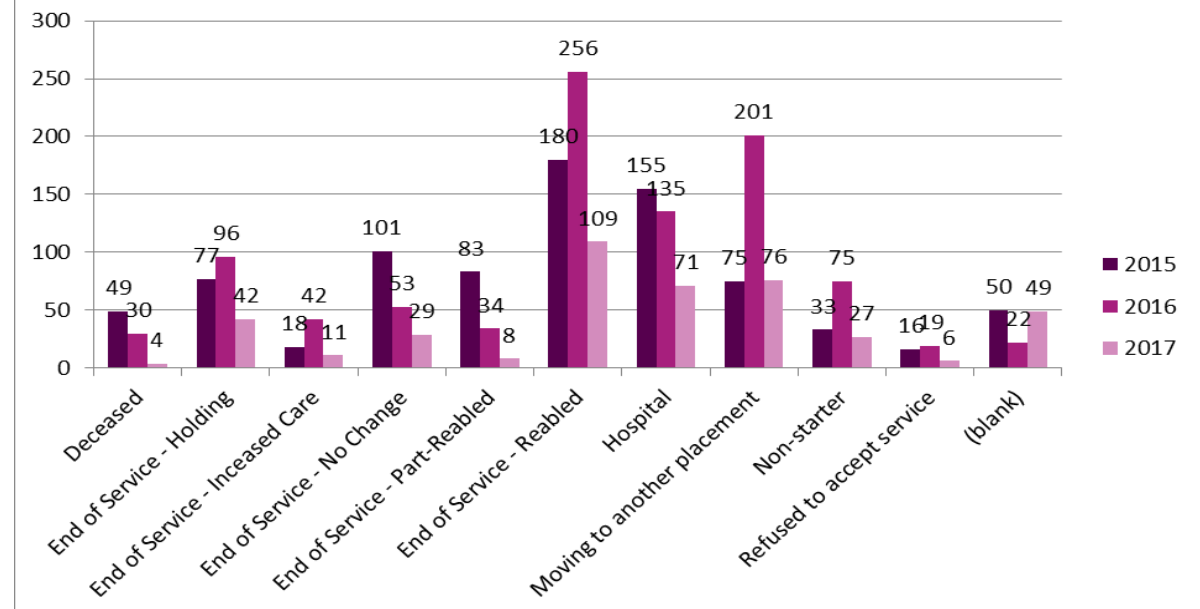
CRT Referral Source



CRT Discharges

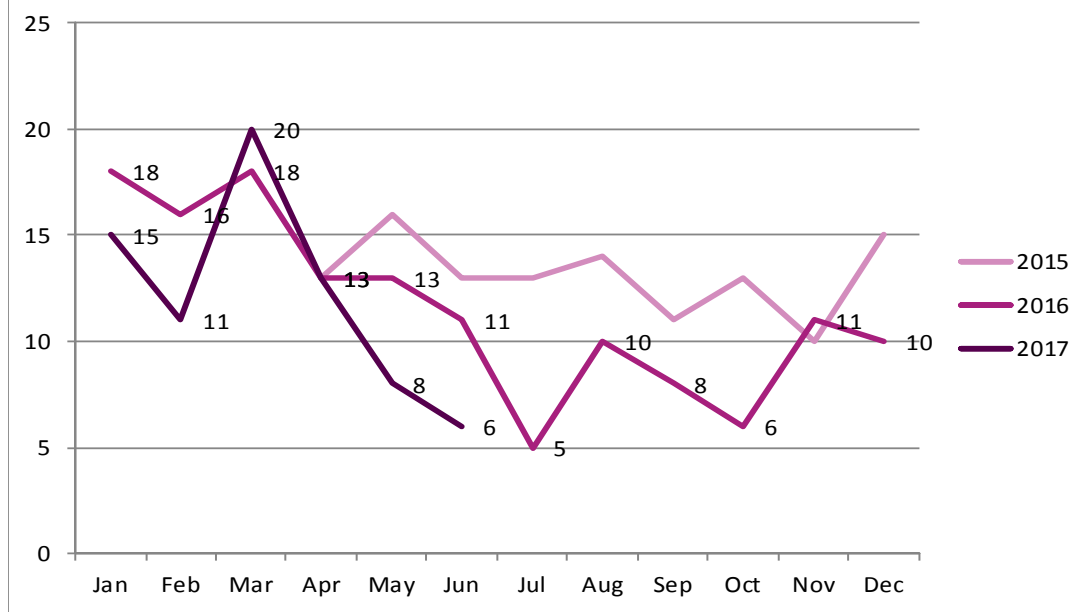


CRT Discharge Destination



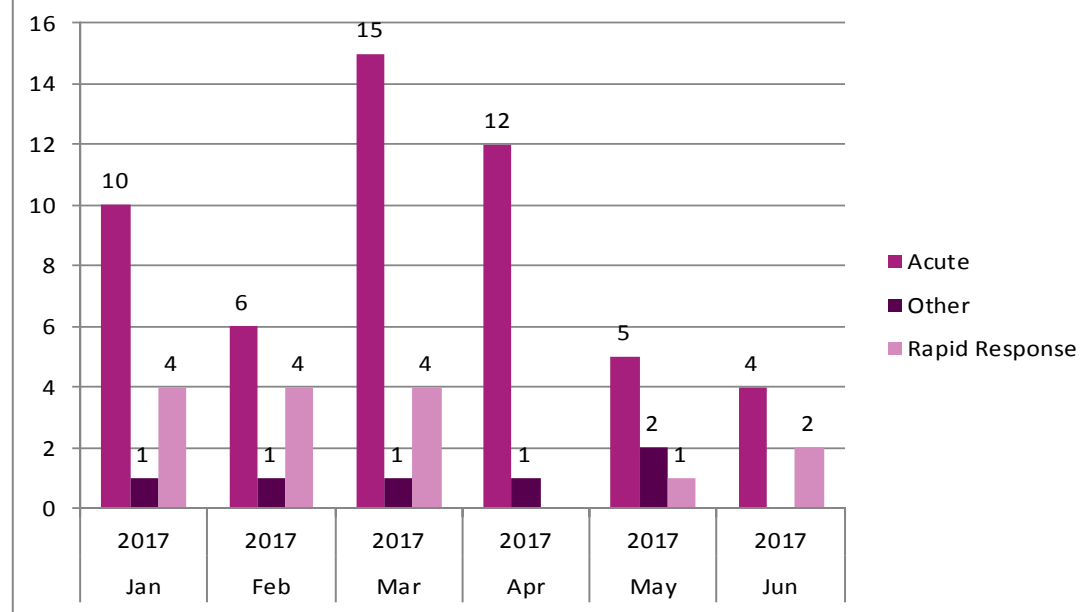
Discharge to Assess (DTA)

DTA Admissions



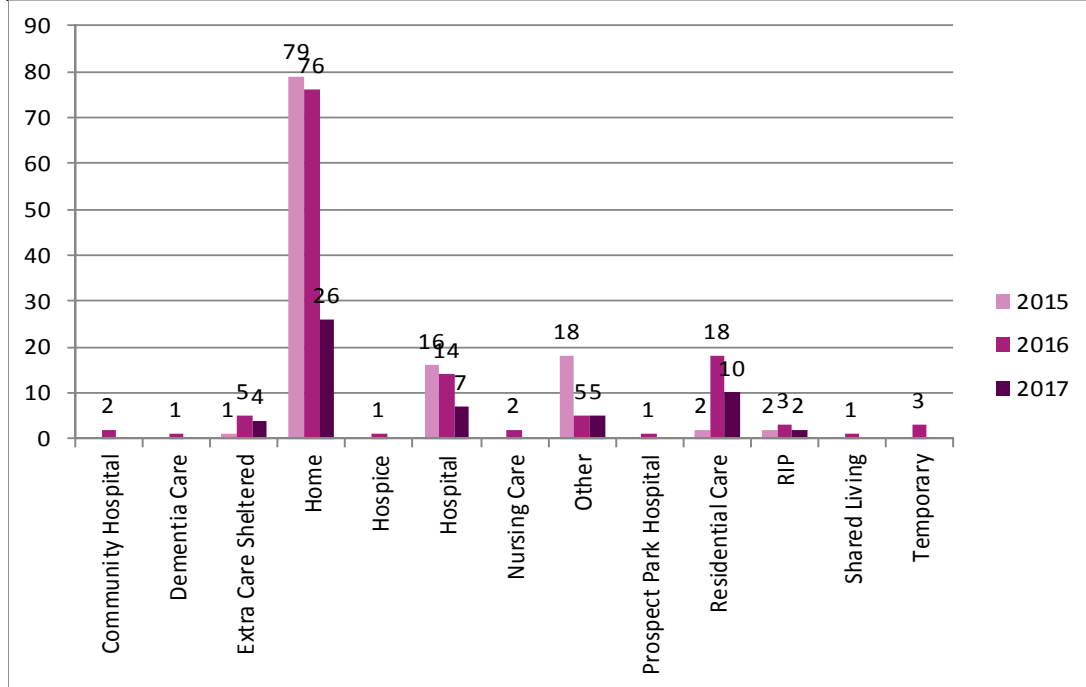
Comments

DTA referral Source



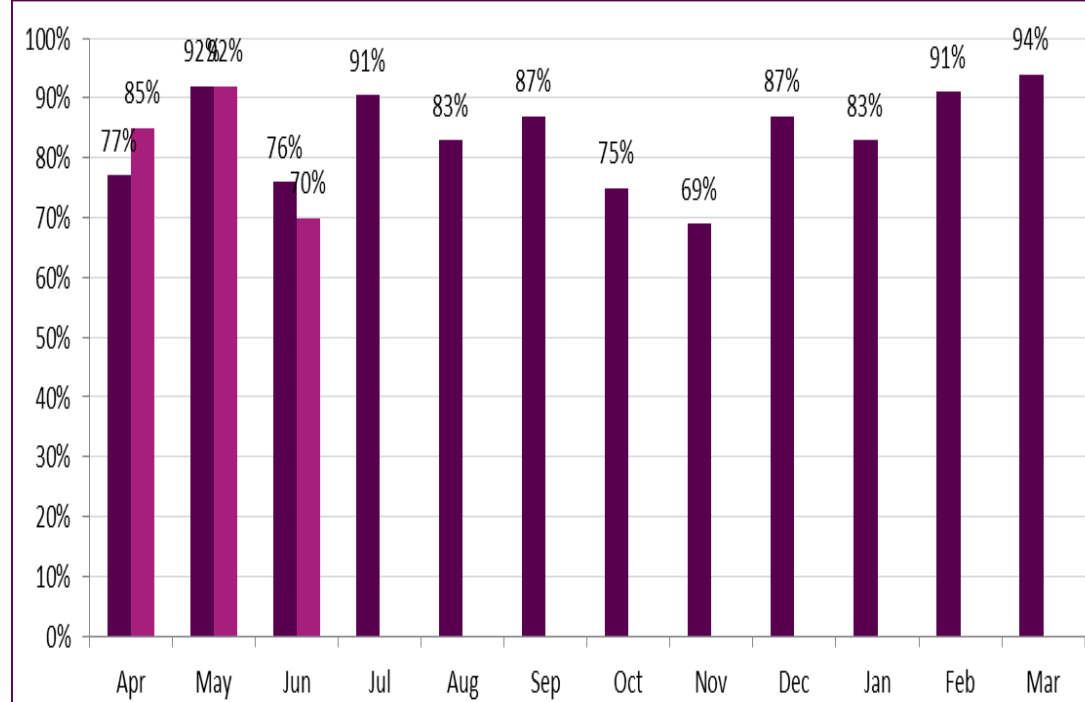
Comments

DTA Destination



Comments

DTA Bed Usage



Comments

Reading BCF Performance - M12 - March 2017

<----- ACTIVITY & BENEFITS ----->

Discharge to Assess

Y-T-D 12 months to March 2017				
Target Reduction	Actual Reduction	Target savings (£2225/NEL) (£26,000/ Care Home admission)	Actual savings (£2225/NEL) (£26,000/ Care Home admission)	Variance to target
		£	£	£
NEL	12	26,700	62,300	35,600
Permanent admissions of older people to residential/nursing care	6	156,000	26,000	-130,000

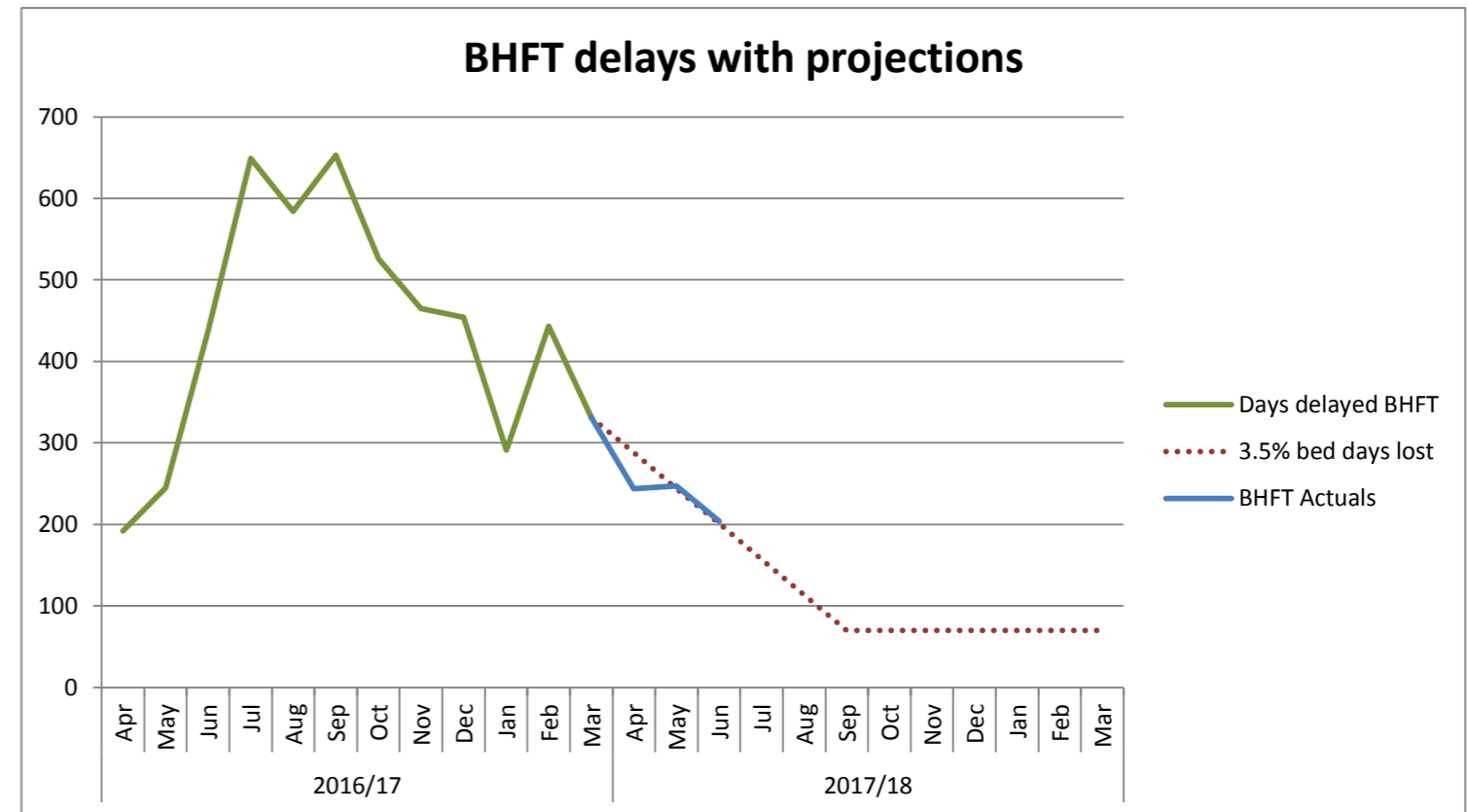
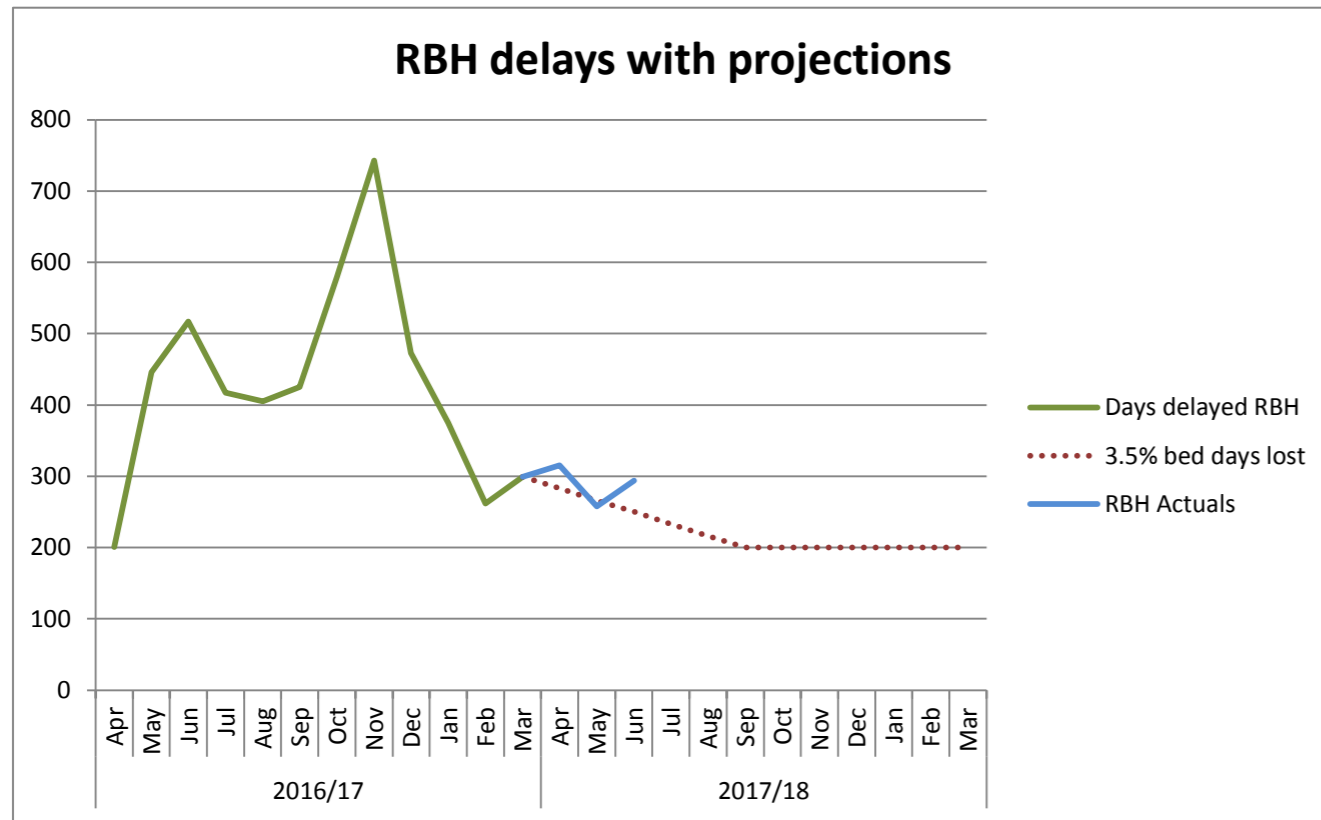
Full Year				
Target Reduction	FOT Reduction	Target savings (£2225/NEL) (£26,000/ Care Home admission)	FOT savings (£2225/NEL) (£26,000/ Care Home admission)	Variance to target
		£	£	£
NEL	12	26,700	66,750	40,050
Permanent admissions of older people to residential/nursing care	6	156,000	26,000	-130,000

CRT/Full Intake Model

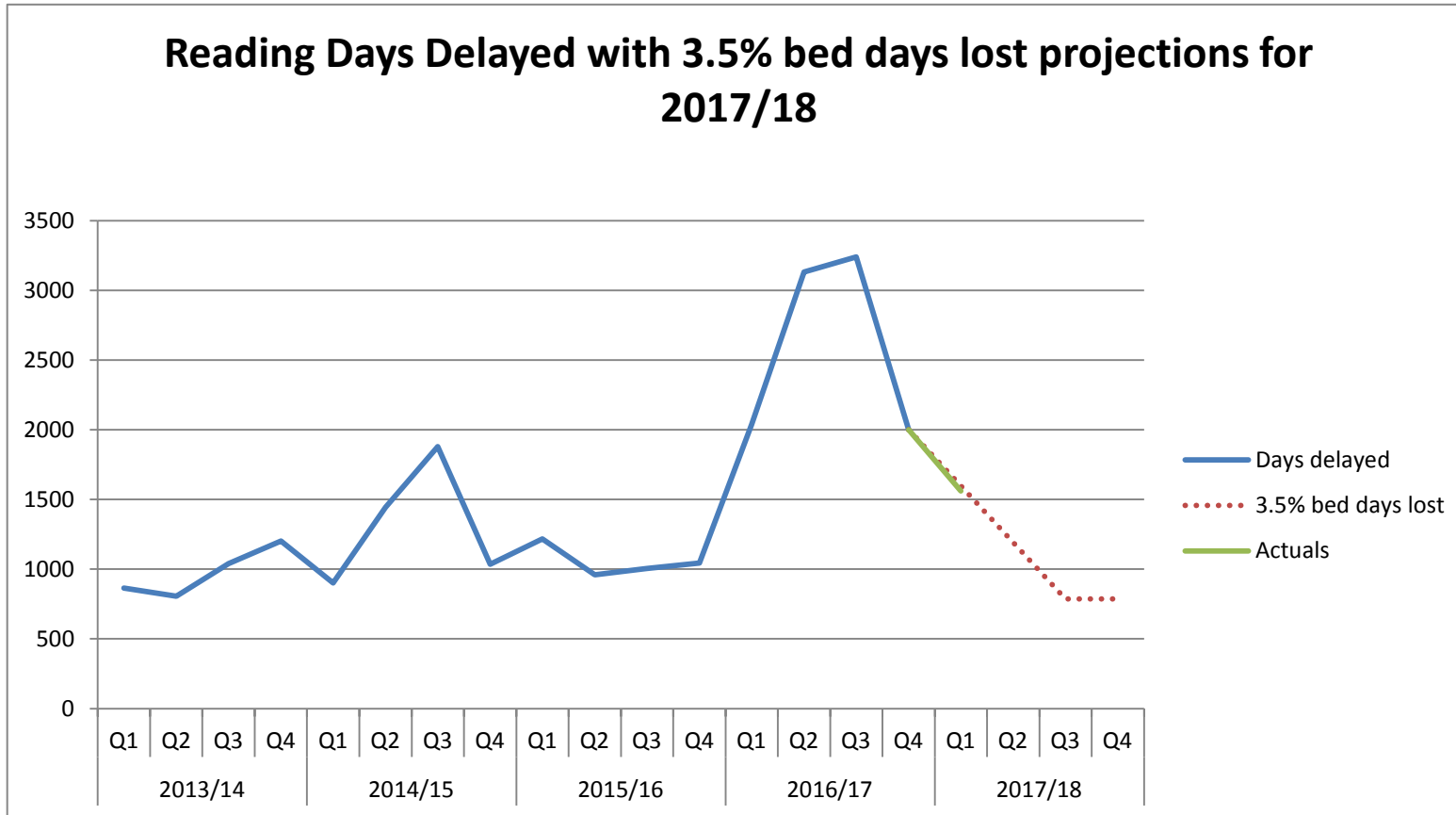
Y-T-D 12 months to March 2017				
Target Reduction	Actual Reduction	Target savings (£2225/NEL) (£26,000/ Care Home admission)	Actual savings (£2225/NEL) (£26,000/ Care Home admission)	Variance to target
		£	£	£
NEL	36	80,100	249,200	169,100
Permanent admissions of older people to residential/nursing care	6	156,000	26,000	-130,000

Full Year				
Target Reduction	FOT Reduction	Target savings (£2225/NEL) (£26,000/ Care Home admission)	FOT savings (£2225/NEL) (£26,000/ Care Home admission)	Variance to target
		£	£	£
NEL	48	106,800	271,855	165,055
Permanent admissions of older people to residential/nursing care	6	156,000	26,000	-130,000

Years	2016/17												2017/18											
Months	Apr	May	Jun	Jul	Aug	Sep	Oct	Nov	Dec	Jan	Feb	Mar	Apr	May	Jun	Jul	Aug	Sep	Oct	Nov	Dec	Jan	Feb	Mar
Days delayed	393	691	954	1066	989	1078	1105	1208	927	666	705	630	559	500	441	381	322	262	262	262	262	262	262	262
Days delayed RBH	201	446	517	417	405	425	579	743	473	375	262	299												
3.5% bed days lost												299	283	266	250	233	216	200	200	200	200	200	200	200
RBH Actuals												299	315	258	294									
Days delayed BHFT	192	245	437	649	584	653	526	465	454	291	443	331												
3.5% bed days lost												331	288	244	201	157	113	70	70	70	70	70	70	70
BHFT Actuals												331	244	247	204									



	2013/14				2014/15				2015/16				2016/17				2017/18				
	Q1	Q2	Q3	Q4	Q1	Q2	Q3	Q4	Q1	Q2	Q3	Q4	Q1	Q2	Q3	Q4	Q1	Q2	Q3	Q4	
Days delayed	865	806	1040	1202	901	1444	1879	1035	1217	959	1005	1045	2038	3133	3240	2001					
3.5% bed days lost																	2001	1597	1192	787	787
Actuals																	2001	1562			



Years	2016/17												2017/18											
Months	Apr	May	Jun	Jul	Aug	Sep	Oct	Nov	Dec	Jan	Feb	Mar	Apr	May	Jun	Jul	Aug	Sep	Oct	Nov	Dec	Jan	Feb	Mar
Days delayed	393	691	954	1066	989	1078	1105	1208	927	666	705	630	559	505	441	381	322	266	275	266	275	275	248	275
Days delayed NHS	240	449	595	500	416	534	508	614	469	328	325	347	307.45	277.75	242.55	209.55	177.1	146.3	151.25	146.3	151.25	151.25	136.4	151.25
3.5% bed days lost NHS Actuals												347	280	303	232									
Days delayed SC	136	242	252	456	480	446	472	491	439	313	288	251	212.42	191.9	167.58	144.78	122.36	101.08	104.5	101.08	104.5	104.5	94.24	104.5
3.5% bed days lost SC Actuals												251	272	181	266									
Days delayed Both	17	0	107	110	93	98	125	103	19	25	92	32	30	28	25	23	21	19	19	19	19	19	17	19
3.5% bed days lost Both Actuals												32	7	21	0									

55 NHS
38 SC
7 Both

For HWB DToC Metric Plan Collection

	209.55	177.1	146.3	151.25	146.3	151.25	151.25	136.4	151.25			
	75.8571	64.1102	52.9606	54.7525	52.9606	54.7525	54.7525	49.3768	54.7525	N&West C	36.2	
	1.2573	1.0626	0.8778	0.9075	0.8778	0.9075	0.9075	0.8184	0.9075	Oxf CCG	0.6	
	126.9873	107.3226	88.6578	91.6575	88.6578	91.6575	91.6575	82.6584	91.6575	SR CCG	60.6	
	5.65785	4.7817	3.9501	4.08375	3.9501	4.08375	4.08375	3.6828	4.08375	Wok CCG	2.7	

